

**Specification sheet LX 1 158**

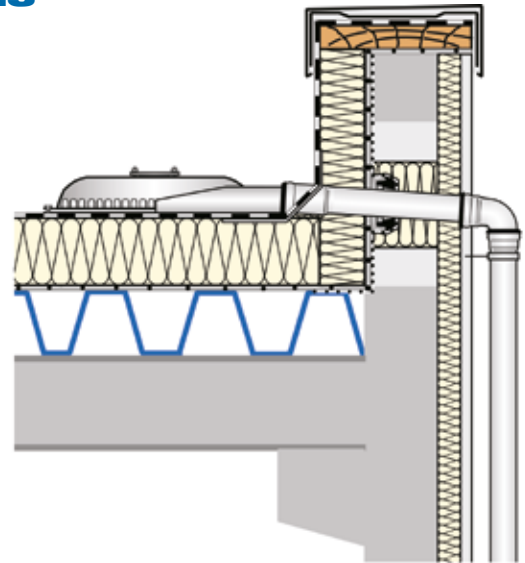
**Siphonic Parapet drainage systems  
Series 62 DRAINJET®  
without roof penetration**

Main Drainage

Siphonic flow

Silent Power

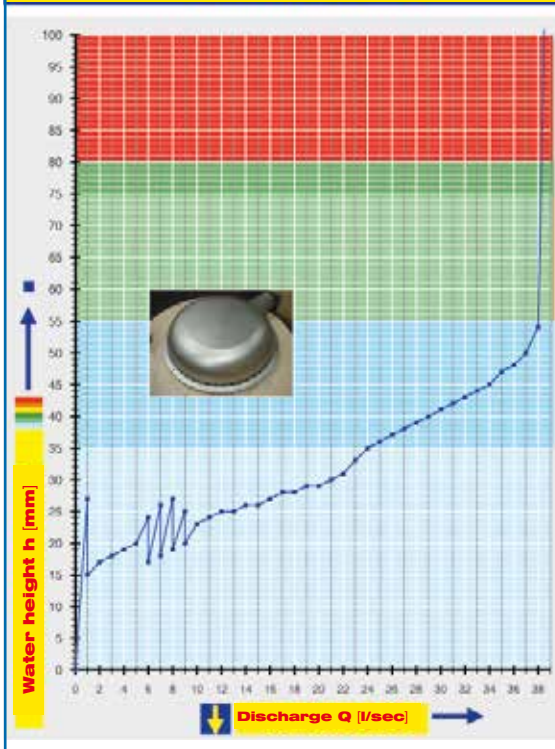
<b>Discharge rate:</b>	<b>38,0 l/sec</b>
<b>Water height:</b>	<b>55 mm</b>
<b>Roof penetration:</b>	<b>0 mm</b>
<b>Diameter:</b>	<b>DN 100</b>
<b>LX-Number:</b>	<b>LX 1 158</b>
<b>Weir height:</b>	<b>0 mm</b>
<b>Drain:</b>	<b>not ventilated</b>
<b>Downpipe:</b>	<b>not ventilated</b>
<b>Downpipe height:</b>	<b>min 4,2 m</b>
<b>Drainage:</b>	<b>in sewer</b>



**LX 1 158 Piece list**

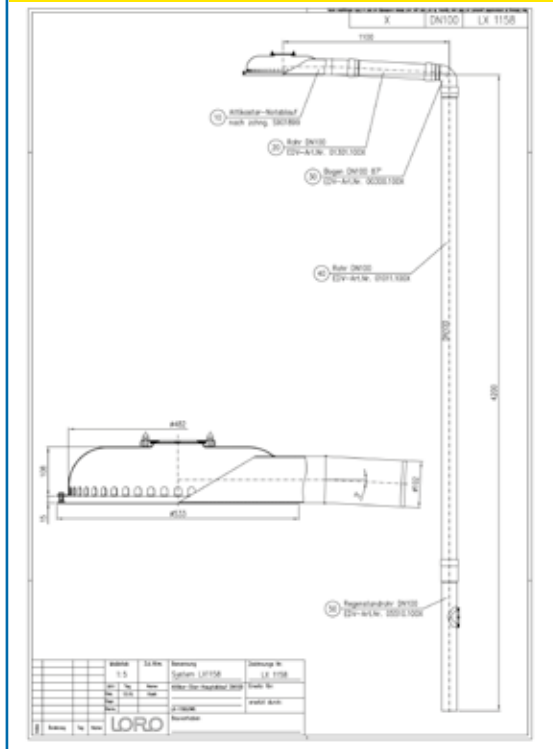
- |  |  |
|--|--|
| 1 x Art.-No. 01347.100X, POWER DRAINJET® Parapet drain | 4 x Art.-No. 00911.100X, LORO-X Sealing elements |
| 1 x Art.-No. 01401.100X, LORO-X Pipe with one socket   | 3 x Art.-No. 00975.100X, LORO-X Pipe clamps      |
| 1 x Art.-No. 13235.100X, LORO-Sliding flange           | 1 x Art.-No. 00986.000X, LORO-X Lubricant        |
| 1 x Art.-No. 00300.100X, LORO-X Bend                   | 2 x Art.-No. 00806.100X, LORO-X Anchor clips     |
| 1 x Art.-No. 01101.100X, LORO-X Pipe with one socket   | 3 x Art.-No. 09604.200X, LORO-X Threaded rods    |
| 1 x Art.-No. 05510.100X, LORO-X Stand pipe             |  |

**hQ - Head Discharge curve**

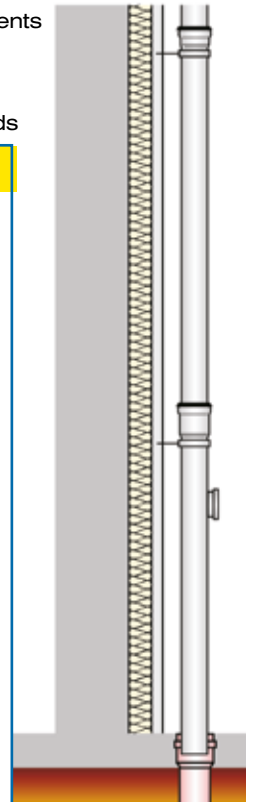


**Systempower**

**CAD**



**Systemshape**



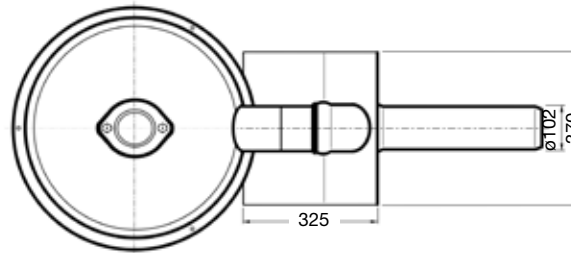
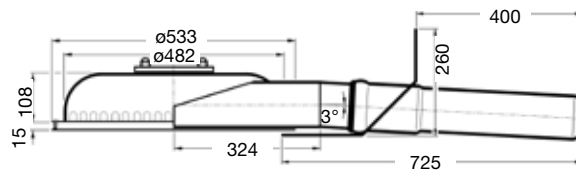
<b>Water height</b>	mm	5	10	15	20	25	30	35	40	45	50	55	60	65	70	75
<b>Discharge</b>	l/sec						21	24	29	34	37	38				
												<b>Power</b>				

**LORO-X POWER DRAINJET® siphonic parapet drainage systems**

**LORO-X POWER DRAINJET®**  
**parapet Drain, DN 100**  
 with **bonding flange 45°** for  
**bituminous roofing sheets**  
 Drain Art.-No. 01347.100X  
 Weigh: 19,8 kg



**LX1158-3X**



**LORO-X Pipe with one socket**

made of hot-dip galvanised steel, DN 100  
 250 mm long Art.-Nr. 01401.100X  
 2000 mm long Art.-Nr. 01101.100X  
 4000 mm long Art.-Nr. 01011.100X



**LORO-X Bend 87°**

made of hot-dip galvanised  
 steel, DN 100  
 Art.-No. 00300.100X



**LORO-X Sealing element**

Art.-No. 00911.100X



**LORO-X Sliding flange**

for attaching the vapor  
 barrier, with pre-installed  
 connection sleeve including  
 fastening screws  
 Art.-No. 13235.100X



**LORO-X  
 Stand pipe**

with cleaning opening  
 made of hot-dip galvanised  
 steel, DN 100  
 Art.-No. 05510.100X



**LORO-X  
 Anchor clip**

made of hot-dip galvanised steel,  
 DN 100  
 Art.-Nr. 00806.100X



**LORO-X Pipe clamps**  
 Art.-No. 00975.100X  
**LORO-X Threaded rods**  
 Art.-No. 09604.200X

**Please note:**

For drainage systems with siphonic flow it is vital that only LORO-X pipes and fittings in the combination as indicated are used. Mixture or exchange of system parts may result in lower discharge capacities! The height of the downpipe must be a min. 4.2m for the indicated capacity to be obtained. If roof drain and downpipe are fitted by different crews, then do follow the system setup acc. to the LX-data sheet at [www.loro-x.com](http://www.loro-x.com)

**Heat tracing:** Lorowerk recommends to check all drains and pipes with regard to their frost-sensibility. Where necessary, these parts should be upgraded with heat tracing.